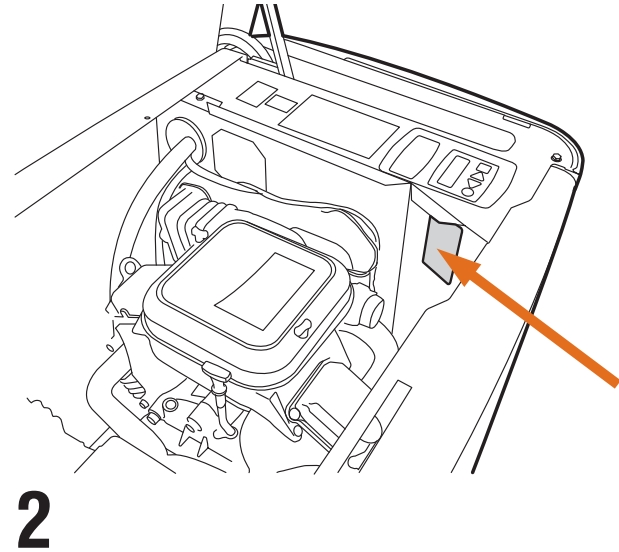
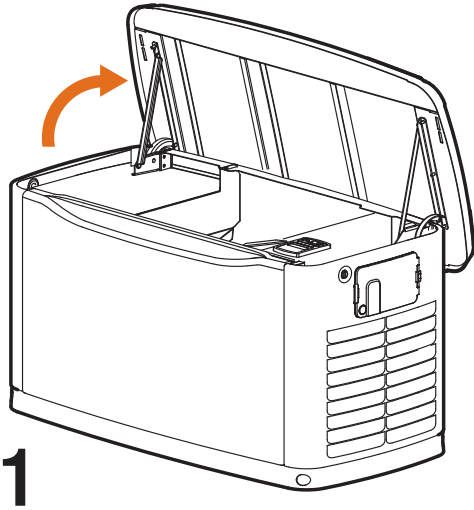


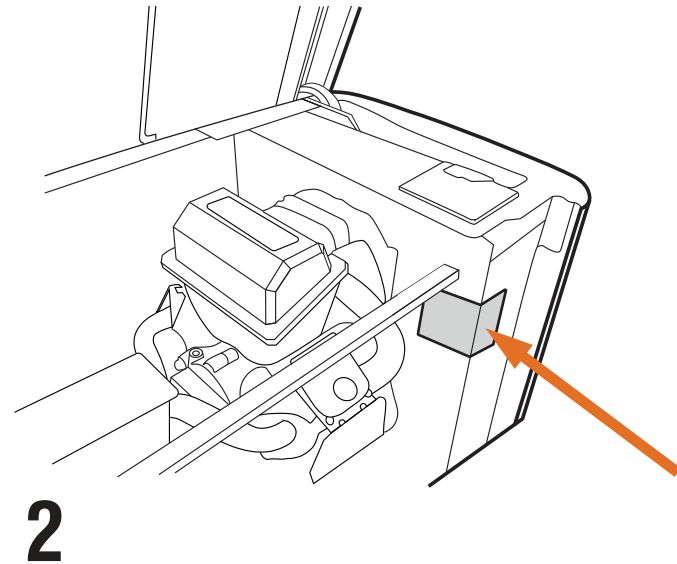
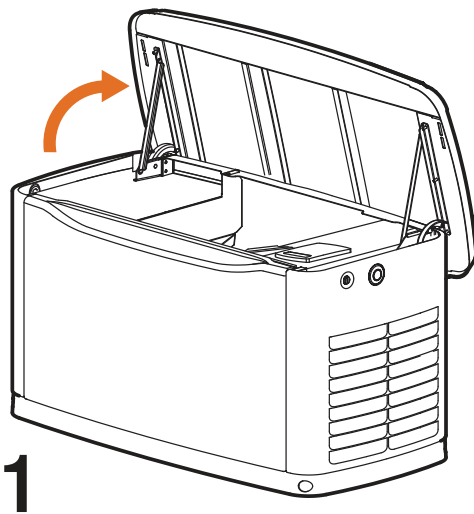
Locate Your Serial Number

RESIDENTIAL (AIR-COOLED)

8kW-20kW (2015 models and earlier)

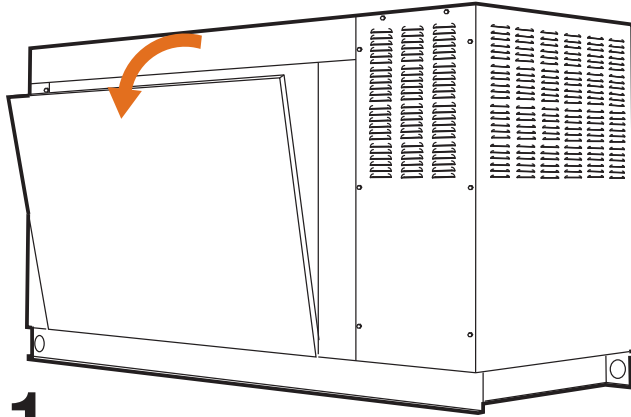


9kW-22kW (2016 models to present)

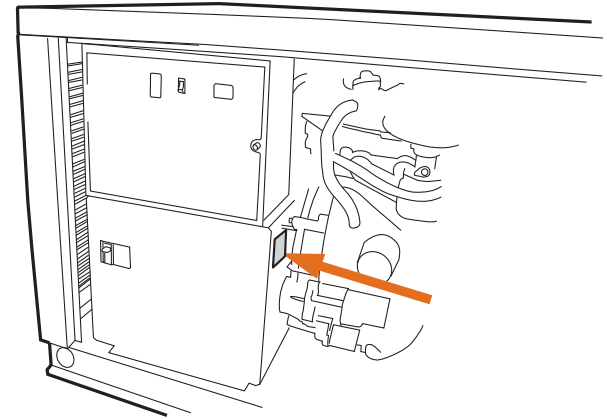


COMMERCIAL (LIQUID-COOLED)

22kW - 60kW



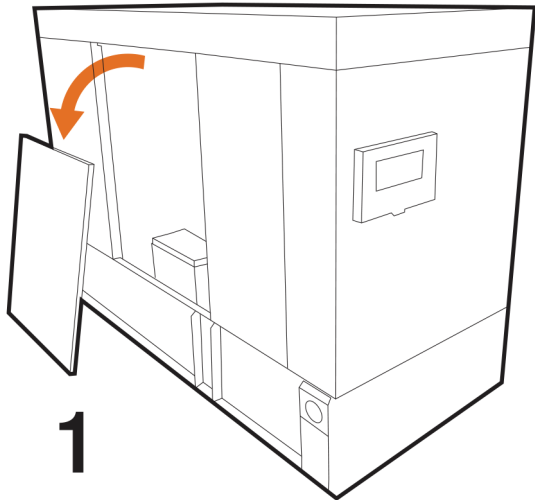
1



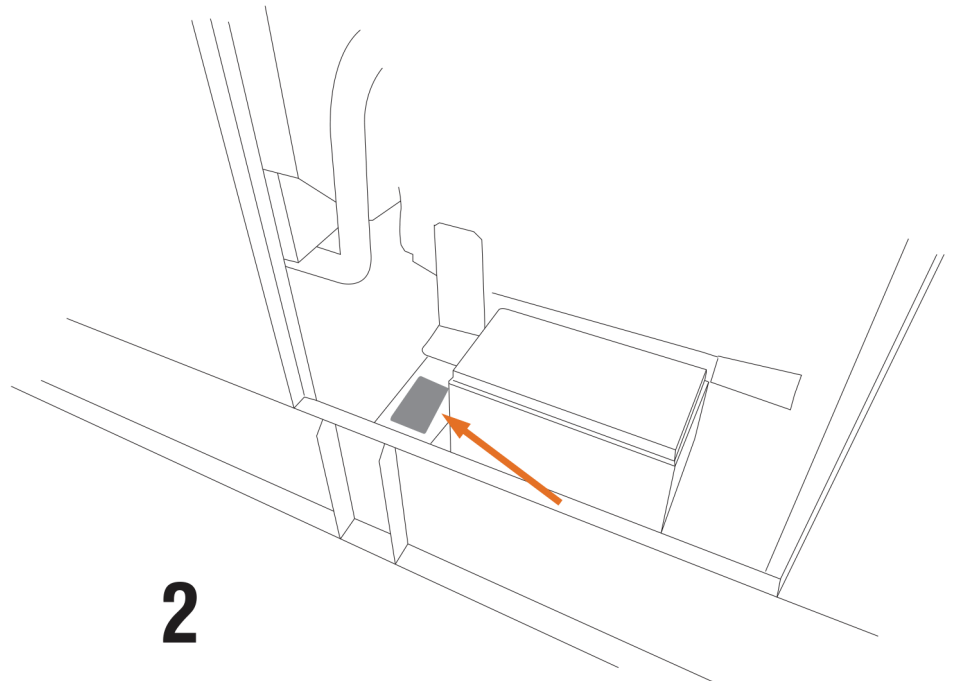
2

PROTECTOR SERIES

15kW - 50kW

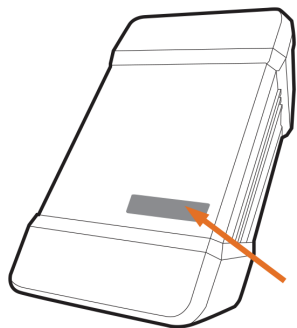


1

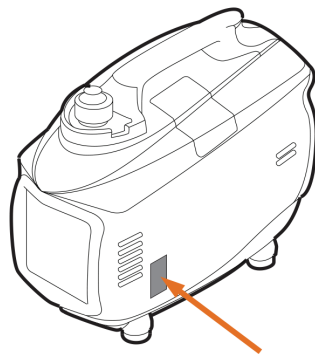


2

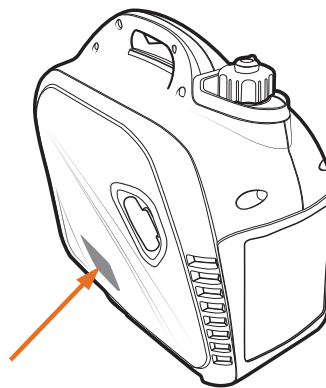
Inverters



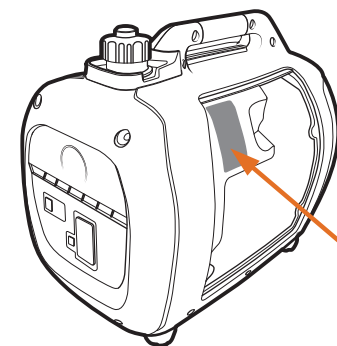
AC Inverter 100 - 750W



iX800 - iX2000

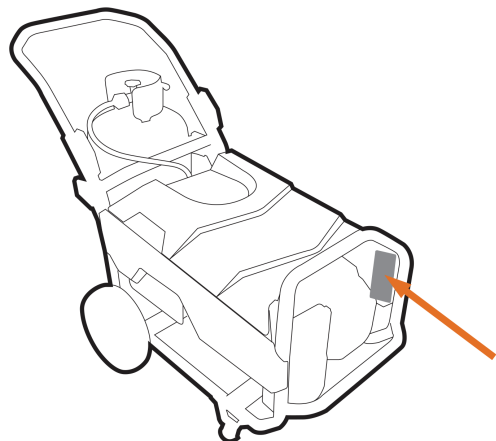


GP2200i

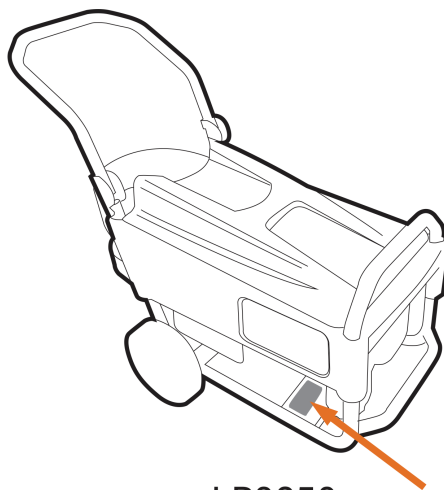


iQ2000

Portables

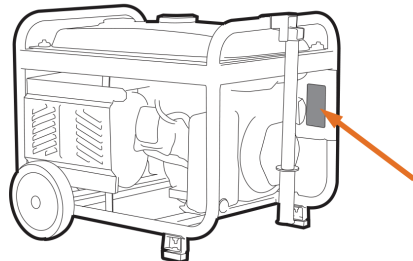


LP5000

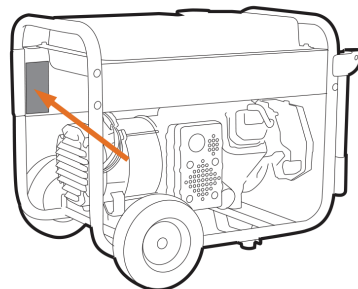


LP3250

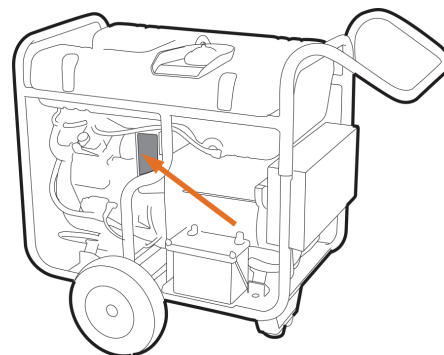
Portables



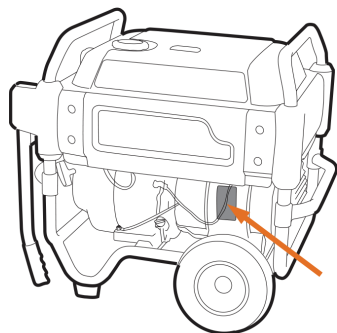
GP1800 - GP3300



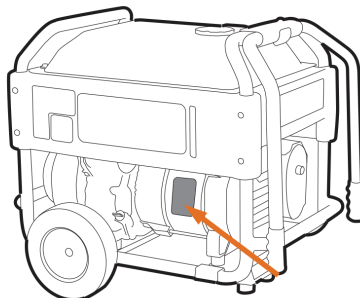
GP5000 - GP8000(E)



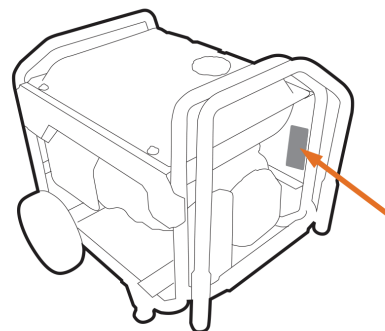
GP15000 - GP17500(E)



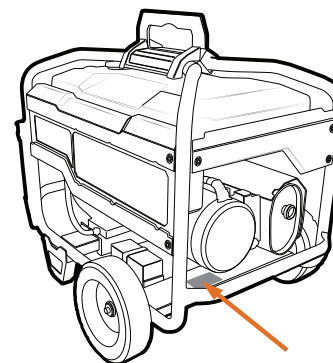
XP4000 - XP10000(E)



XG4000 - XG10000(E)



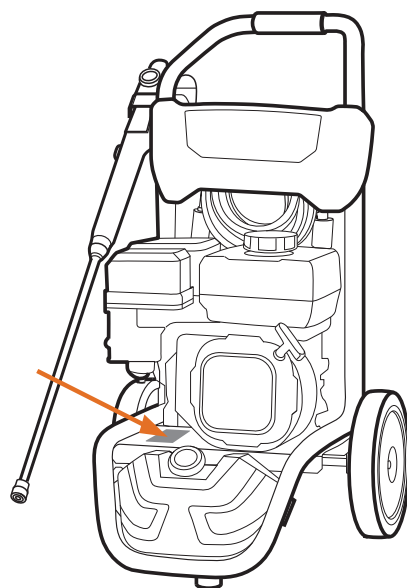
XT8000E



XC6500 - XC8000(E)

Pressure Washer Products

(Location may vary slightly)



Water Pump Products

(Location may vary slightly)

